

Configuring Your Phone

Configuring via web user interface

Accessing the web user interface:

1. Press the **OK** key when the phone is idle to obtain the IP address of the phone.
2. Open the web browser on your computer, enter the IP address into the address bar (e.g., "http://192.168.0.10" or "192.168.0.10") and then press the **Enter** key.
3. Enter the user name (default: admin) and password (default: admin) in the login page and click **Confirm**.

Network Settings: Click on **Network->Basic->IPv4 Config**

You can configure the network settings in the following ways:

DHCP: By default, the phone attempts to contact a DHCP server in your network to obtain its valid network settings, e.g., IP address, subnet mask, gateway address and DNS address.

Static IP Address: If your phone can not contact a DHCP server for any reason, you need to configure the IP address, subnet mask, gateway address, primary DNS address and secondary DNS address for the phone manually.

PPPoE: If you are using an xDSL modem, you can connect your phone to the Internet via PPPoE mode. Contact the ITSP for the PPPoE user name and password.




Note: The wrong network settings may result in the inaccessibility of your phone and may have an impact on the network performance. Contact your system administrator for more information.

Account Settings: Click on **Account->Register->Account X (X=1,2,3,4,5,6)**

Parameters of the account:

Register Status:	It shows the register status of the current account.
Line Active:	You can select Enabled/Disabled to enable/disable the account.
Label:	It is shown on the touch screen to identify the account.
Display Name:	It is shown as caller ID when placing a call.
User Name:	It is provided by ITSP for registration (required).
Register Name:	It is an authenticated ID for authentication provided by ITSP (required).
Password:	It is provided by ITSP for registration (required).
Server Host:	It is provided by ITSP for registration (required).


Register status icons on the touch screen:

 (Green) Registered  (Gray) Register Failed  (Green and Flashing) Registering

Note: Check with your system administrator if any error appears during the registration process or a specific configuration is required for your registration.

Configuring via phone user interface

Network Settings:

When the phone is idle, tap  -> **Advanced (password: admin)**-> **Network->WAN Port/VLAN/Webserver Type/802.1x Settings/VPN** to configure the network.

Account Settings:

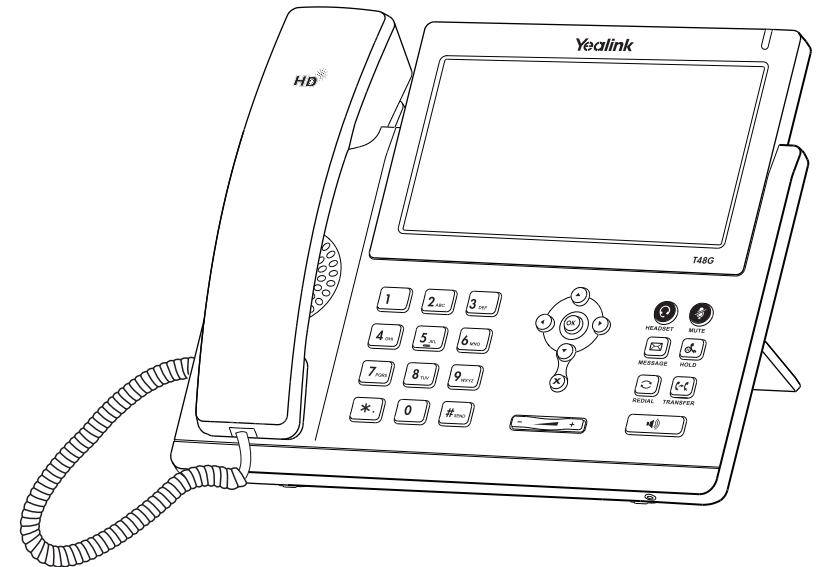
When the phone is idle, tap  -> **Advanced (password: admin)**-> **Account** to configure the account.

Note: For more information on account parameters, refer to **Configuring via web user interface**.

Yealink

EASY VoIP

Ultra-elegant Gigabit IP Phone SIP-T48G



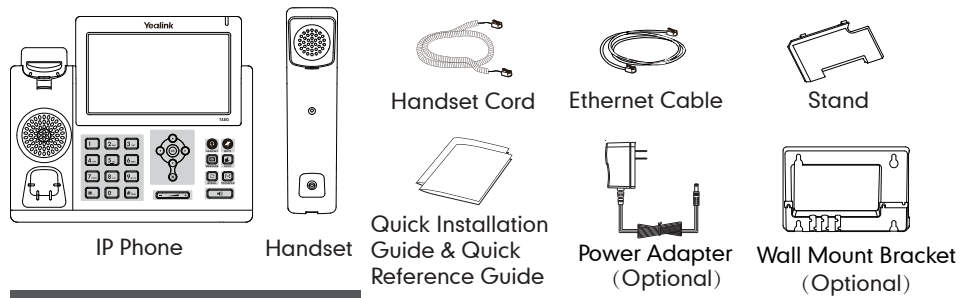
Quick Installation Guide (V72.4)

www.yealink.com

Applies to firmware version 72.1 or later.

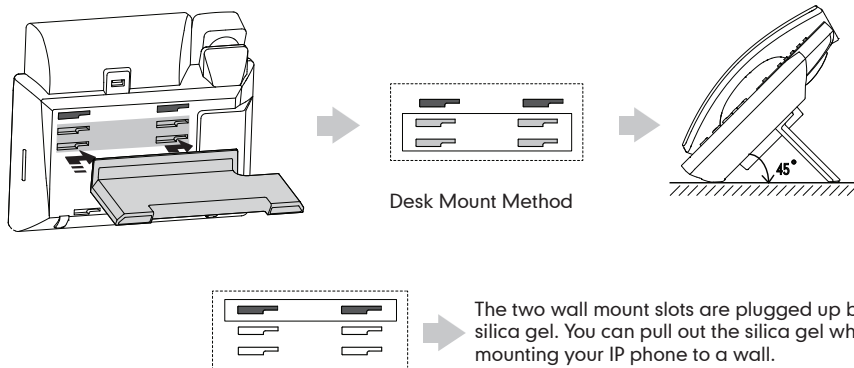
Packaging Contents

The following items are included in your package. If you find anything missing, contact your system administrator.



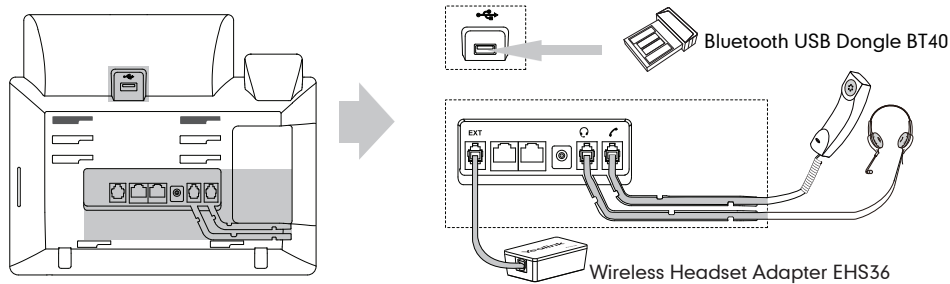
Assembling the Phone

1. Attach the stand, as shown below:



Note: For more information on how to mount the IP phone to a wall, refer to *Yealink Wall Mount Quick Installation Guide for SIP-T4X IP Phones*.

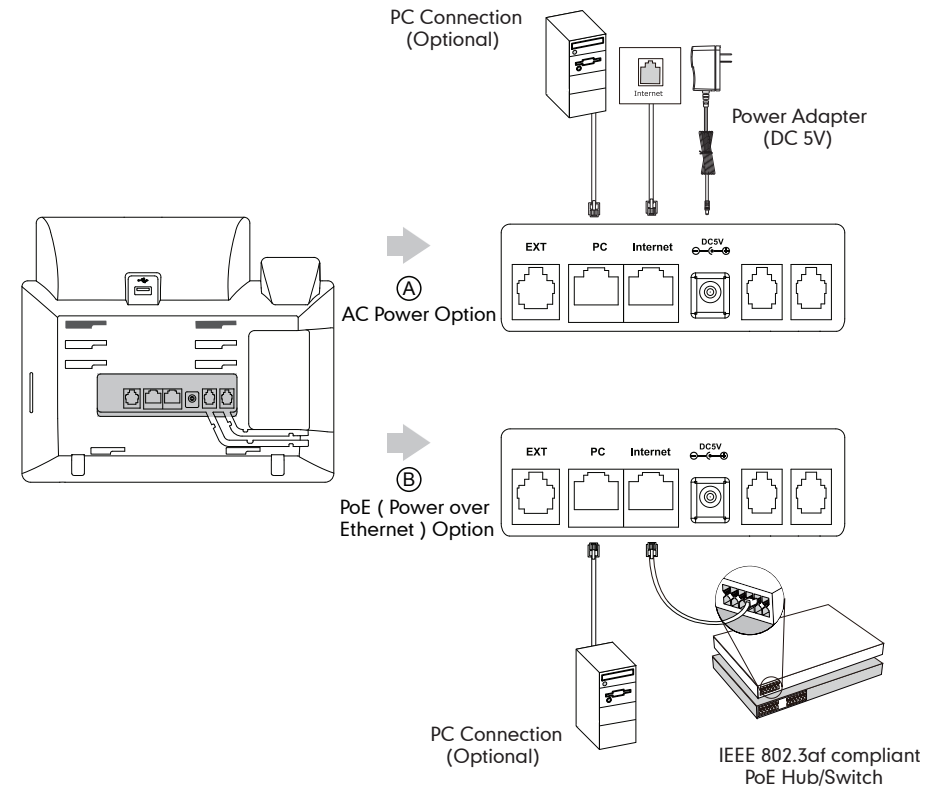
2. Connect the handset and optional headset, as shown below:



Note: The headset, Bluetooth USB dongle BT40 and wireless headset adapter EHS36 should be purchased separately. The EXT port can also be used to connect the expansion module EXP40. For more information on how to use the EHS36, EXP40 and Bluetooth USB Dongle, refer to *Yealink EHS36 User Guide*, *Yealink EXP40 User Guide* and *Yealink Bluetooth USB Dongle BT40 User Guide*.

3. Connect the network and power, as shown below:

You have two options for network and power connections. Your system administrator will advise you on which one to use.



Note: If inline power (PoE) is provided, you don't need to connect the power adapter. Make sure the hub/switch is PoE-compliant.

Startup

After the IP phone is connected to the network and supplied with power, it automatically begins the initialization process. After startup, the phone is ready for use. You can configure the phone via phone user interface or web user interface.

